

Datasheet

Product Name : 6 Scenes DALI Wall Touch Panel

Model No. : ZD-660D

Release Date : 2022-07-06

Document version.

2021/12/20 Ver. 1.0

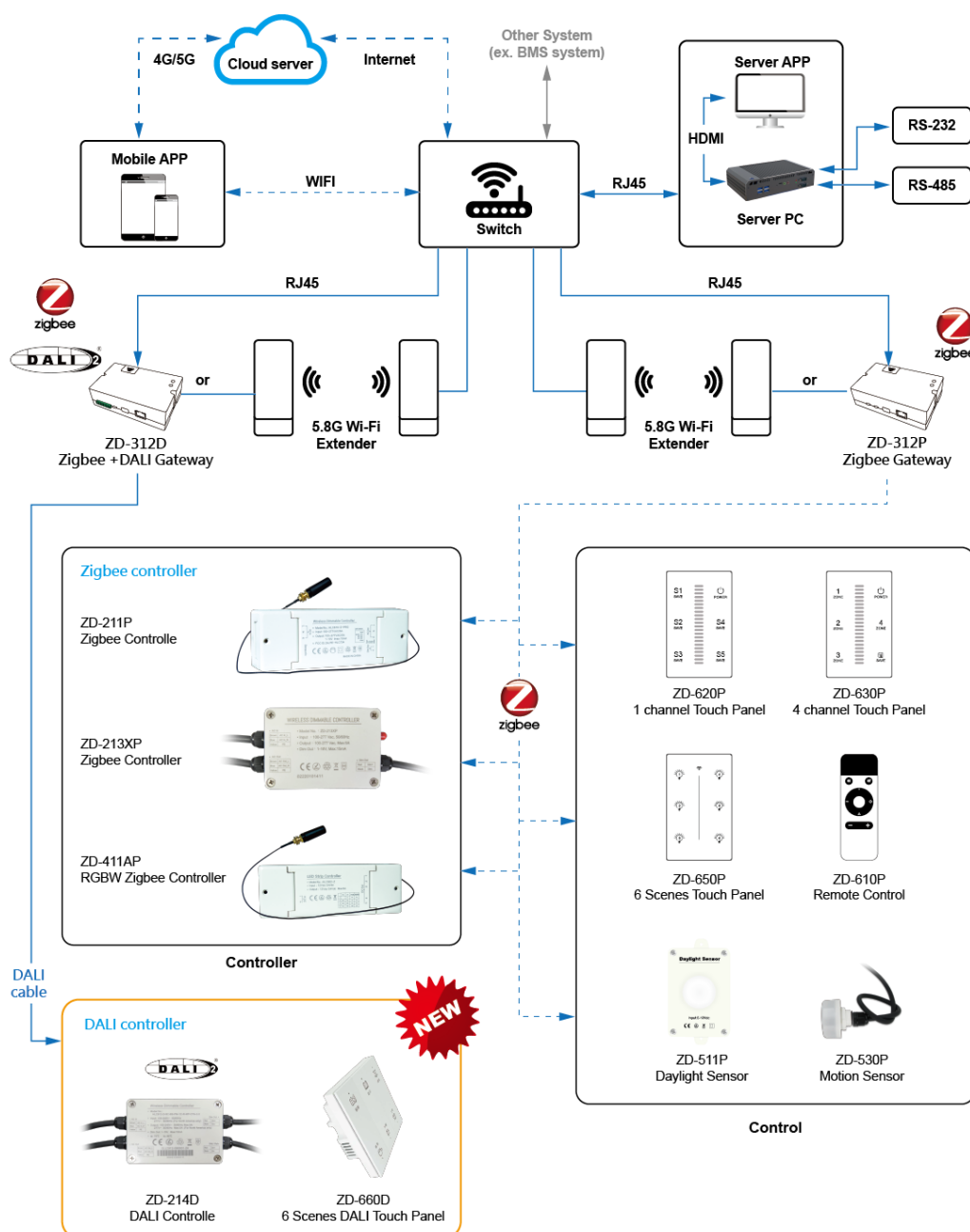
2022/07/06 Ver 1.1

批准	核對	製作

1 Functions

ZD-660D is a DALI 6 scenes wall touch panel, it complies with standard DALI protocol, Via its mode switch, it can setup as DALI1 mode or DALI 2 mode. When in DALI 2 mode, The touch panel is able to link 6 scenes in the gateway to buttons. The gateway must be online when in DALI2 mode. In DALI1 mode, the gateway can be offline, the wall panel is able to work standalone. (Please see manual for detail operation)






2 Infrastructure





Product photo

(1) Button function definition :

Button	Functions
 	Scene 1~6 buttons Quick touch button to change scene,
	In DALI 2 mode, when touch panel is power on, the No.3 button start blinking → Device is initiating.
 	Long press Button 1 and 6 simultaneously for 10 sec. Button 3 indication lamp start blinking → Device is reset to factory default.

※Icon on front panel can be customized design, MOQ is 50PCS.

3 Connections Definition

(1) The connection interface is defined as below :

Port	Description		Memo
AC Input	L_IN	100-277 Vac input	When connecting additional AC input, One DALI power is able to support >=2x DALI wall panels
	N_IN	100-277 Vac input	
DALI Bus	DA+	DALI + signal input	When not connecting additional AC input, only by DALI power
	DA-	DALI -signal input	

			source, allowable connecting panel is ≤2pcs.
--	--	--	--

※If require connecting more than 2 DALI wall panels in one DALI bus, let the wall panel connect additional AC input.

4 Parameters

Param.	Description
Input Voltage	100~277Vac 50/60Hz
DALI mode	Standard DALI protocol DALI 1/DALI 2 mode selectable
Working Temp.	-40°C ~ 85°C
Idle Wattage Consumption	<1W
Weight	141g
Package	1pcs/Box
Case Material	PC