



Datasheet

Product Name : Zigbee 2.4G+DALI Twin Comm. Gateway

Model No. : ZD-312D

Release Date : 2022-05-25

Document version.

2022/05/25 Ver 1.0

Approved	Audit	Design

1 Functions

ZD-312D is a special twin communications (DALI+Zigbee) Gateway, It is able to connect with ZigBee devices with follow Zigbee 3.0 protocol, and connect with DALI devices simultaneously. When 2.4Ghz zigbee signal is interfered badly and unusable, this gateway is able to change to DALI wired system (lamp controller also requires DALI interface) ,especially in outdoors environment. Just as Zigbee gateway, it uses same APP and software and equip same complete lighting controlling function. Such as User-defined groups, scenes, scheduling, switch and sensor linking.

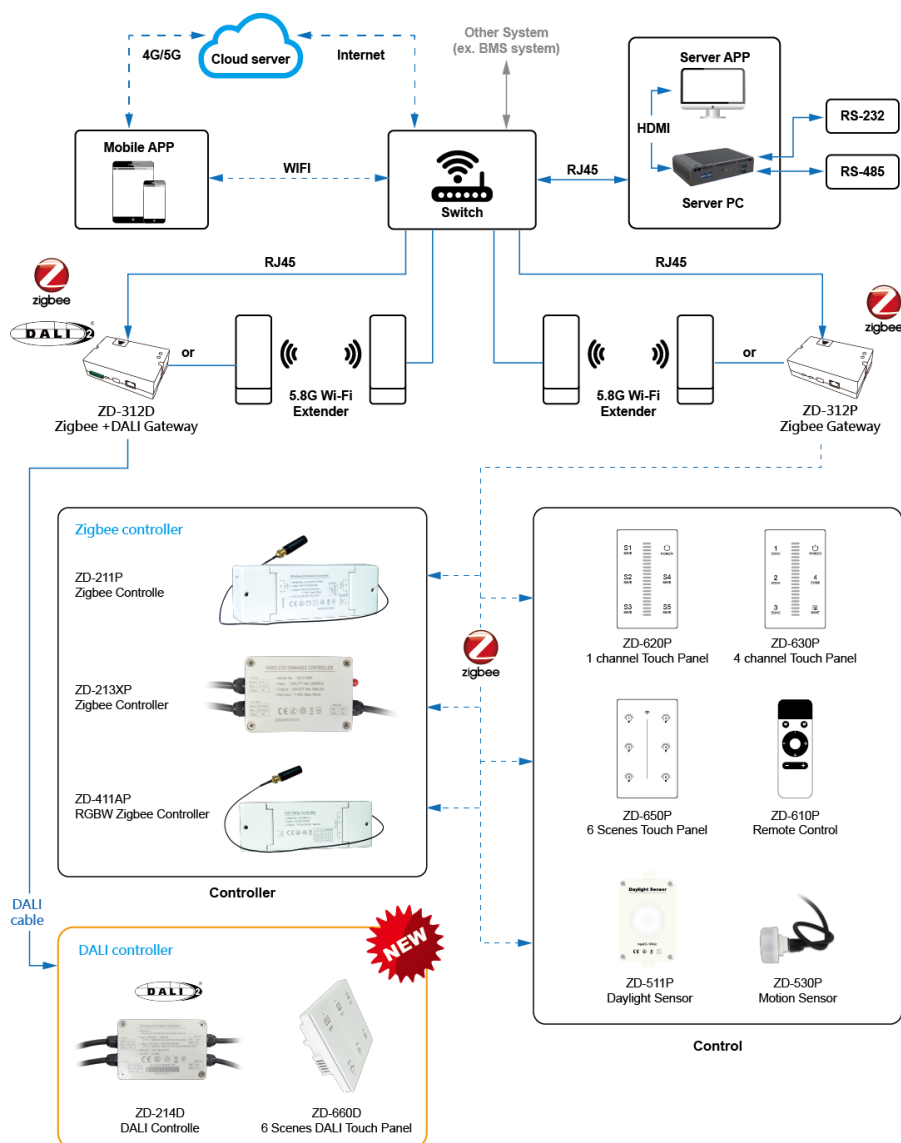
2 Features

- Based on HA1.2/Zigbee 3.0 standard wireless protocol and Dali wire protocol.
- Input voltage DC 5V, micro USB interface. Compatible for all standard DC5V adapter.
- 1x RJ45 10/100M LAN por, Zigbee module and DALI module.
- Support Account management and privilege setting.
- One gateway support maximum 200 devices (DALI+Zigbee) :
 - (1) Support 200 Zigbee end devices and 50 Zigbee groups.
 - (2) Or support 2 xDALI Bus, Maximum 128 DALI Devices, support 16 DALI groups, each group contains Max.128 DALI devices.
 - (3) DALI devices and Zigbee device are allowed joined in same Gateway to work simultaneously.

(e.g: Total allows max. devices= 200, if use 128 DALI devices and you still can connect $200-128=72$ Zigbee devices.)

- Support 30xZigbee Scenes, 16xDALI scenes
- 20x Areas
- 20x Schedules
- Each Schedule support Max. 20 devices or Groups.
- Support multiple gateways co-work in same network.
- Support POE
- Support OTA firmware upgrade.
- Support Dry Contact to control all ON/OFF DALI switches.

3 Infrastructure








4 Product Description

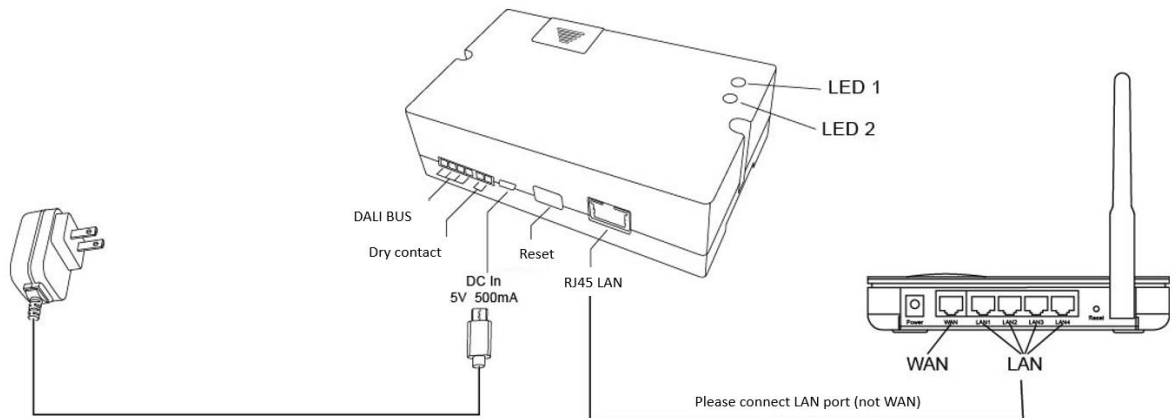
(1) Product photo



Adapter type :

		
ZD-312D-EU	ZD-312D-US	ZD-312D-UK
		
ZD-312D-AU	ZD-312D-CN	

(2) The connection interface is defined as below :



(3) Reset button :

(a) As function button

- Short press(<3 sec.) Send gateway parameters to App.
- Long press(>10 秒) Reset password: (To factory default: 00000000, and reset Gateway to get IP via DHCP)

(b) LED indication lamp :

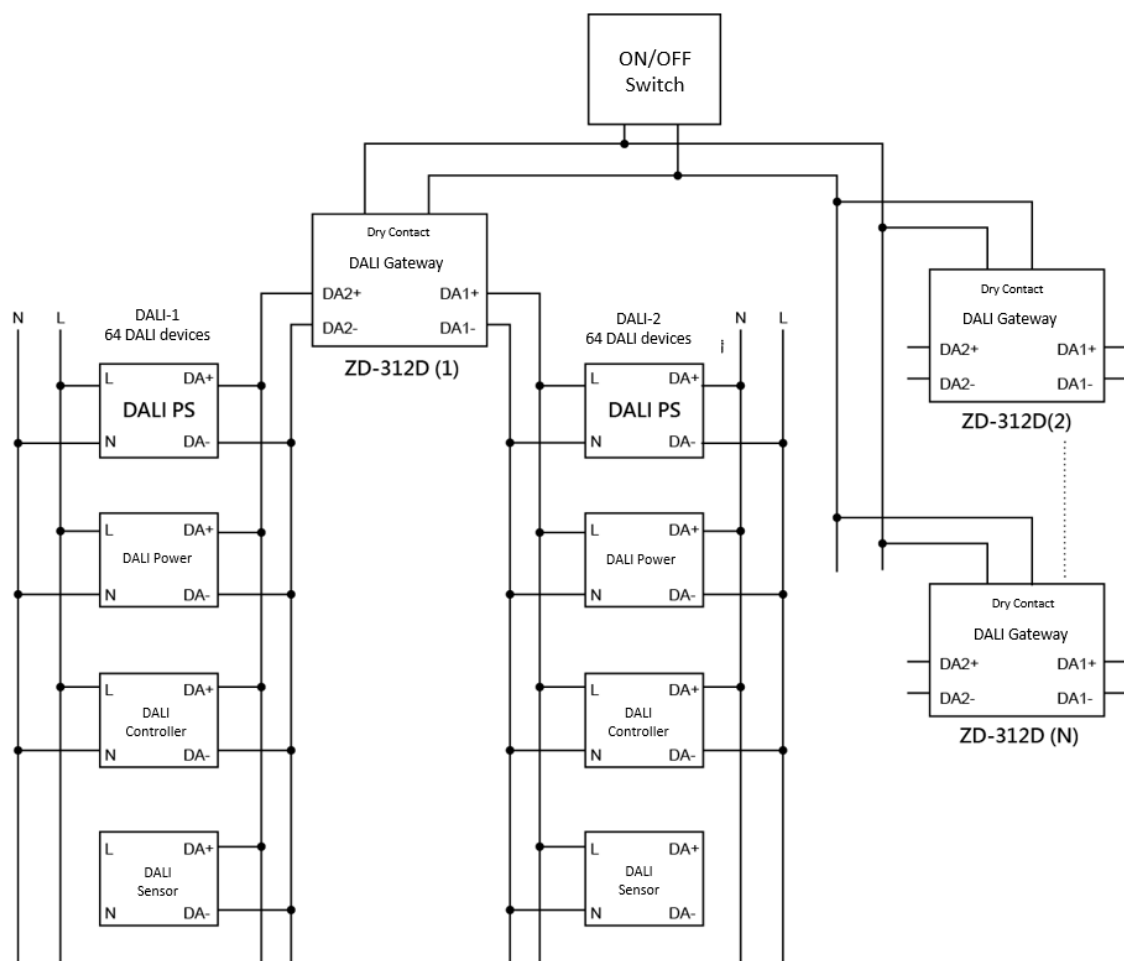
- RED blinking —Gateway connection is unsuccessful.
- GREEN —Gateway connection is successfully established and ready.
- RED/GREEN blinking —Searching Zigbee or DALI end devices is processing now.

(c) Ports :

- 4pin interface: 2x circuits DALI bus outputs.
- 2pin interface: 1 x dry contact signal input.

(4) System Diagram

The Dry Contact input is able to ON/OFF all of the device in the DALI gateway, the gateway offers 2 x DALI bus outputs, each bus support max. 64 DALI devices (Include DALI power, DALI lamp controller, DALI sensors).



5 Parameters

Param.	Description
Input Voltage	DC 5V 500mA Max
LAN Port	RJ45, 10/100M
Wireless Frequency	2.4GHz
Working Temp.	-20°C ~ 55°C
Max. Transmit Distance	30m
DALI General Bus	DA1 : Max. 64 DALI devices DA2: Max. 64DALI devices Max. distance 300M

6 Dimensions

128.5 x96 x 38mm



7 Weight

ZD-312D-EU : 283g

ZD-312D-US : 283g

ZD-312D-UK : 2871g

ZD-312D-AU : 280g

ZD-312D-CN : 283g

8 Package

1pcs/Box